



Many people are using the award-winning *Lost Communities of Virginia* book to tour the state, but there are many more fascinating places than we had room for in the book. *Lost Communities of Virginia* Driving Tours introduce travelers to lesser known aspects of Virginia history by providing back road routes to lost communities and suggested stops at places that tell the stories of the communities, provide unique cultural experiences, and patronize local businesses that exemplify the lost community ideals of the tour through their buildings, landscapes, or history.

Each driving tour brochure covers a few counties at a time via rural roads, with historical information and points of interest highlighted, along with a detailed map showing the tour route. An on-line component will provide additional information and GPS coordinates. We are currently completing a Southside Driving Tour and are identifying logging communities in Appalachian Virginia for future western Virginia tours.

#### Meet the Staff



**Elizabeth Gilboy**  
Director  
egilboy@vt.edu



**Lara Browning**  
Landscape Architecture  
Project Manager  
lara17@vt.edu



**Jack Rosenberger**  
Landscape Architecture  
Project Coordinator  
jrosenb@vt.edu



**Terri Fisher**  
*Lost Communities of Virginia*  
Project Manager  
tfisher@vt.edu



**Jen Jessup**  
Lead Landscape Designer  
jjessup@vt.edu



**Kim Steika**  
Communications and  
Outreach Manager  
ksteika@vt.edu



**Maxine Lyons**  
Office Manager  
lyons@vt.edu



*Streetscapes of Virginia* is for anyone involved with physical improvements of downtown areas in Virginia, particularly communities that cannot afford to hire a full-time Main Street revitalization manager. It provides a framework for developing general design guidelines for downtowns and supplies case study examples of successful Main Street revitalization projects throughout the Commonwealth. Urban forestry guidelines and four Main Street revitalization case study chapters have been posted on our website: <http://www.cdac.arch.vt.edu/streetscapes.html>. Look for additional case studies there soon!

*Funding for these projects has been provided in part by the Virginia Department of Forestry, the Kentucky Division of Forestry, the Virginia Main Street Program, and the Virginia Tech Office of Economic Development.*

# CDAC JOURNAL

## Community Design Assistance Center

College of Architecture & Urban Studies  
Virginia Tech

Volume 12

Fall 2014



*CDAC believes every community deserves quality design that promotes a healthy, sustainable way of life.*

CDAC is an outreach center in the College of Architecture and Urban Studies, that assists communities, civic groups, and nonprofit organizations in improving their natural and built environments through research, community engagement, and interdisciplinary design. We provide opportunities for students to engage with communities, connecting university knowledge with real world experience. CDAC believes every community deserves quality design that promotes a healthy, sustainable way of life. This design philosophy is reflected in projects such as trails for health and fitness, parks for outdoor relaxation, outdoor learning environments, and plantings to reduce erosion and stormwater runoff.

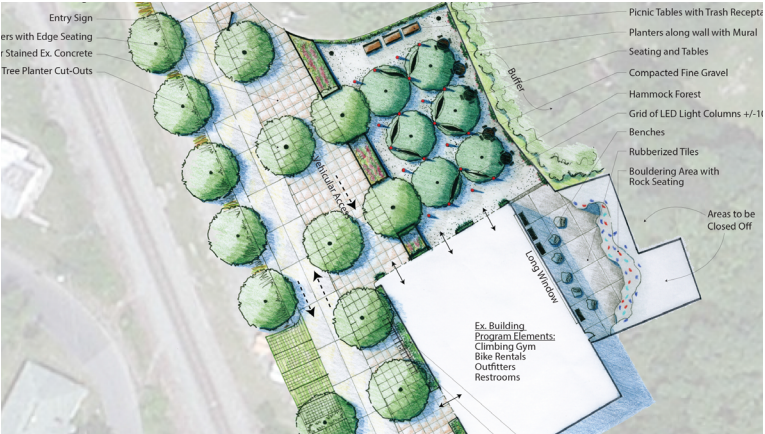
CDAC specializes in landscape architecture, architecture, interior design, and planning. Since its humble beginnings in 1988 through a grant from the U. S. Department of Education's Fund for the Improvement of Post Secondary Education, the Design Center has assisted over 240 communities throughout the Commonwealth of Virginia. In 2012, CDAC expanded beyond Virginia's borders to assist communities in the coal region of Kentucky. In 2014, CDAC will commence a partnership with the Forest Service to assist Appalachian communities in North Carolina, as well as Virginia and Kentucky, in developing conceptual plans to conserve, protect, and enhance community natural resources.

Abingdon | Greendale Elementary School  
Outdoor Classroom and Educational Trail



CDAC and Virginia Tech’s Educational Interpretation Forestry Class worked closely with Greendale Elementary School to create conceptual designs for outdoor classrooms, a learning trail, and signage. Outdoor classroom and trail features provided hands-on applications for grade-appropriate Standards of Learning. This project was intended to help address obesity and poverty by encouraging physical activity and teaching students about nutrition and vegetable gardening.

Waynesboro | Sunset Park Master Plan



CDAC worked with the City of Waynesboro to develop conceptual designs for a potential park on the site of a former landfill. Not only does the site offer exceptional views of the surrounding area, but it is also clearly visible from downtown Waynesboro. The CDAC team worked to emphasize views from the park while creating an aesthetic backdrop to the city. The master plan included hiking and biking trails, a pavilion and picnic area, overlooks, and ziplines. In addition, the team developed conceptual designs for the reuse of the refuse building and entryway into the park.

Bridgewater | Mill View Estates Park Conceptual Design



Mill View Estates park is a 4.7 acre park located in the northwestern section of Bridgewater’s corporate limits. The conceptual master plan incorporates a variety of stormwater best-management practices and creates an aesthetic feature from an existing retention pond. In addition, the park offers natural play areas for both school age children and toddlers and a community garden with a pavilion. Located near John Wayland Elementary School, the park also provides opportunities for “Safe Routes to School” connections.

Cleveland | Elementary School Site Redesign, Ball Park Redesign, and Riverwalk



CDAC worked closely with the Cleveland community, located in Russell County, to develop conceptual designs for upgrading an existing ball park and creating a new campground at the former elementary school site. These upgrades will give Cleveland the unique opportunity to take advantage of outdoor recreational opportunities along the Clinch River. Connecting these project sites to downtown will also create opportunities for increased health, education, and economic growth. Since the final report was completed in September 2014, the community has already be able to raise approximately \$800,000 utilizing CDAC’s plans.

Southwest VA | Clinch River Access Points  
Design Guidelines



The Clinch River, located in Southwest Virginia, meanders over 300 miles from its headwaters in Tazewell County to its confluence in East Tennessee. This project was part of a larger effort of the Clinch River Valley Initiative to bring tourism to the region by developing the Clinch River as a blueway. The access point guidelines provide design recommendations for all communities in the Clinch River Valley and design concepts for various types of signage. In addition, CDAC created an access point for Cleveland, VA as a pilot site. Since the project’s completion, Cleveland has received a \$10,000 grant to complete the access point and construction is underway.

Elkhorn City, KY | Elkhorn City Visitors Center  
and Community Center Conceptual Designs



CDAC worked with community members from Elkhorn City, KY to design an engaging and inviting visitor center for the city that would provide tourists with amenities such as restrooms and dining, as well as information about things to see and do nearby. CDAC also designed a community center for the residents of Elkhorn City to provide space for events such as weddings, meetings, and fundraisers, and to serve as an emergency shelter. The past and current character of the city is influenced by the Russell Fork River, the railroad, and the arts. Both designs incorporate these elements to provide an aesthetic specific to Elkhorn City.

Jenkins, KY | Devil John Wright Trail Linkage and Enhancement Master Plan



Jenkins, located in Letcher County, KY, began as a railroad town; however, it most notably has a history in moonshining and the legendary Devil John Wright. A notorious law man, civil war soldier, and moonshiner in the area, Devil John became known for gunslinging and ruthlessness. It was the desire of Jenkins to capitalize on this history in the master plan for the city. CDAC worked with Jenkins to develop a conceptual design for the Devil John Wright Moonshine trail, gateways into the city, and an overall master plan for the community. Since the project’s completion in March 2014, Jenkins has raised \$112,000 for the trail and gateway signage.

Blacksburg | Design Review Panel



While CDAC student design teams work strictly at the conceptual design level and do not address cost estimates or construction details, we do strive to develop final conceptual products that move our clients’ visions one step closer to implementation. To help us in that effort, CDAC has formed an interdisciplinary panel of design professionals to review our conceptual designs and offer professional and practical feedback. Many of our design review panel members are CDAC alumni, with a keen understanding of the types of projects and clients that we assist.

*Above: Joshua Galloway from CHP Design Studio reviews student designs. Interested in serving on the panel? Contact: [egilboy@vt.edu](mailto:egilboy@vt.edu)*